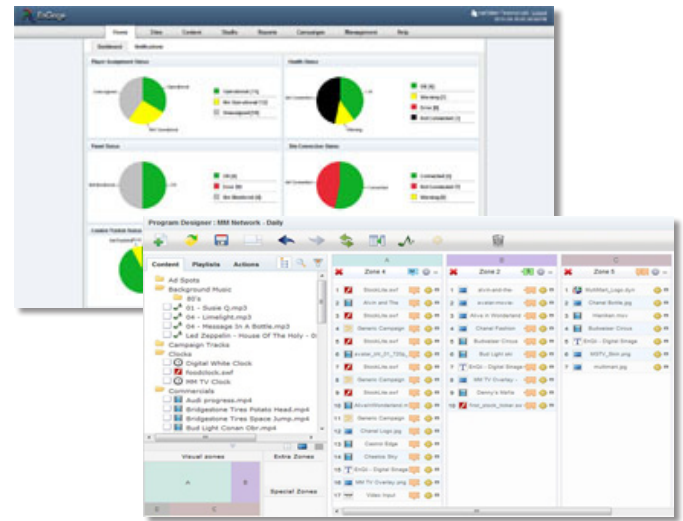




Connect. Engage. Influence.

EnQii's EnGage platform is a sophisticated planning, distribution and management system for digital signage networks. Building on a decade of industry experience, EnGage provides the full breadth of capabilities necessary to excel, along with an open architecture that supports customized solutions.

EnGage is entirely web-based and enables users to create, manage and measure highly-targeted digital signage networks with minimal strain on time, resources or budgets. EnGage masks complicated tasks simple, and allows users to efficiently orchestrate almost any content experience for their audiences.



Why be EnGage'd?

- "Leapfrog" technology that sets a new standard for intelligent, secure content delivery.
- Superior database-driven media targeting, scheduling and network operations capabilities that lower total owner costs.
- Comprehensive, end-to-end business services and solutions.
- A simplified, yet sophisticated user experience, available from any Web browser.
- A platform ready and open for client customization and converging media demands.
- Rock-solid reliability and security, built for true scale.
- A 10-year heritage of experience, innovation and excellence.
- Rated by experts, three years running, as the industry's No. 1 solution.

What is the pricing model?

EnGage is a Software as a Solution service. Clients pay a low monthly cost per player and leave the heavy IT lifting to us. An enterprise version is available for clients who want or need to bring operations in-house.

What's our background?

EnQii has been developing digital signage solutions for over 10 years, has over 100 clients around the globe and major offices in London, New York, Hong Kong, Shanghai, Toronto and Melbourne. EnQii has been voted the number one digital signage player worldwide for 2008, 2009 and 2010.

EnGage Player

The EnGage player uses greater intelligence to manage the demands of dynamic scheduling. Whether you're programming pre-determined playlists or building complex playlists for large networks, rely on EnGage players to apply your targeting and playout rules.

Operators have full visibility and control over their network, with the reassurance of a totally robust and secure operating system. Costly on-site repairs are minimized, and reporting provides the quality of audited reporting required by advertisers.

EnGage Network Manager

EnGage is easy to learn, use, and manage. EnGage Network Manager is a Web 2.0-driven user experience, including a customizable dashboard, rich interactive charts and reports, with drag-and-drop convenience.

Administrators create different user profiles, with roles and permissions to suit business needs and preferences. Multiple APIs allow clients and third-parties to integrate with the EnGage platform, enabling the creation of customized and compelling content experiences.

Other Engage Components

EnGage Creator

Simple template based messaging

EnGage Music

Integrate your music with your digital signage

EnGage Content Apps

Best of breed content providers

EnGage Campaigns

Sophisticated ad management tool

EnGage API

Integrates with other parts of your business

EnGage Enterprise

Host your own EnGage