

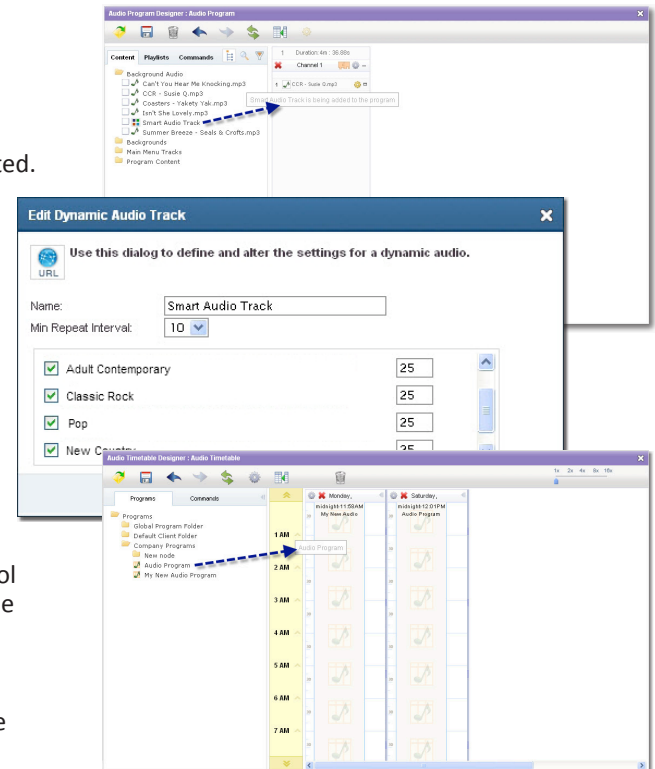


The EnGage Music module extends the EnGage digital signage platform to provide in-store background music. Create the ultimate retail theatre experience by combining audio and video. EnGage provides one easy to manage web-based tool to control the ambience of all – or just one – of your stores from a central location.

Given the wide geographic scale of today’s business, the EnGage Music solution is the way to ensure consistency and ease of management. EnQii has taken care of the hard work and has secured global content agreements to ensure that the content is licensed for all countries. This ease of deployment is just another reason why EnQii’s global strategy is chosen by the leading names in retail, leisure, hospitality and transport.

**Key Features:**

- **Automated selection.**  
Assign one or more genres to an EnGage Music player and let the system manage playback, ensuring that song rotation and genre mixes are respected.
- **Flexible Scheduling.**  
Want a perky morning, a mellow afternoon and a hopping night-time? EnGage Music’s timetable enables you to create the right mix for every occasion. Powerful scheduling capabilities provide the means to change programming during each day, specific date ranges, days of the weeks, or weekdays and weekends.
- **Fresh content.**  
EnGage Music is updated once per month with the latest tracks to ensure your store is fresh and hitting the right groove.
- **Control when you need it.**  
EnGage provides the means to adjust volume levels remotely and to control the mix between the volume apportioned to digital signage and the volume levels of background audio.
- **Flexible licensing model.**  
License one EnGage player and control the ambience store wide, or license two or more to provide music on a per department level.



EnQii is working in partnership with leading music content suppliers to recognize the complex profiling of music tracks (by genre, era, pace etc), and to integrate playout rules and parameters into the EnGage platform.

